

# Clear Steps to INSPIRE Compliance while gaining real value too!

## Compass Informatics

Gearoid O’Riain, Manuel Treiber, Ali Robinson,  
Roger Longhorn

[www.compassinformatics.eu](http://www.compassinformatics.eu)

[inspire.compass.ie](http://inspire.compass.ie)

## What is the INSPIRE Directive

- A statutory instrument which is changing the way we **Discover & View Spatial Data**.
- Aim is to create EU-wide **Spatial Data Infrastructure (SDI)**.
- Enable the **sharing of Environmental Spatial Information** among public sector organisations.

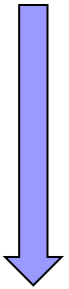
## Why do we need to become INSPIRE compliant

The INSPIRE Directive has recently been transposed into Irish law - 03.2010

- **Rationalise** spatial data across Europe
- **Harmonisation** of spatial data from all over Europe
- Provide **access** to Spatial Data across Europe via efficient search mechanisms

## What Data must become INSPIRE Compliant

2010



2013

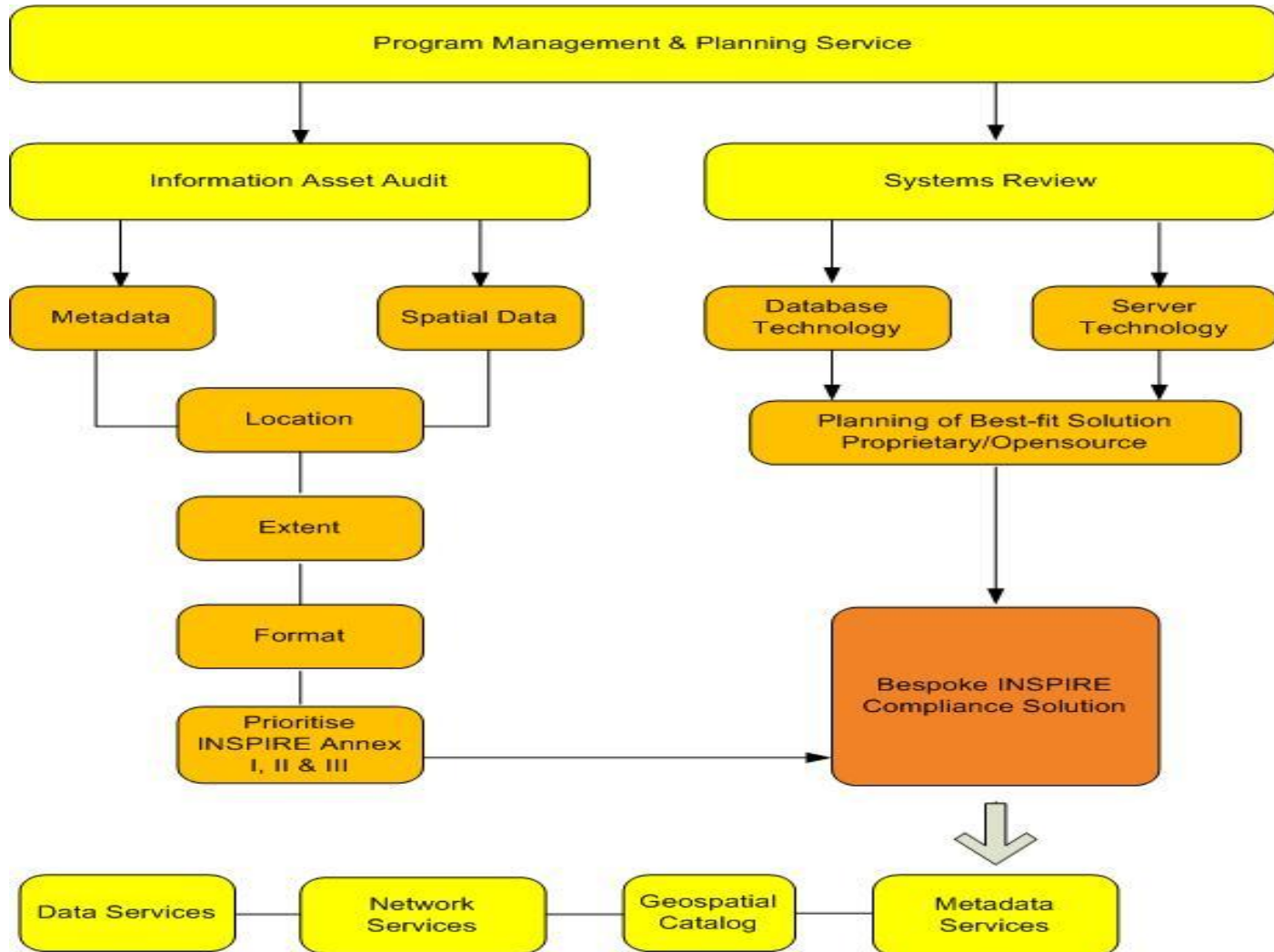
Subject areas described in Annex I,II and III

- Annex I : e.g. boundaries, roads, railways, hydrography
- Annex II: e.g. elevation models, topography, orthophotos
- Annex III: e.g. buildings, geology, land use

## Components of INSPIRE Directive – Relevancy for your organisation

- Metadata (Discovery)
  - ❑ Web Catalogue Service (CSW) 11.2011
  - ❑ Metadata (Annex I, II) must be INSPIRE compliant by 12.2010
  
- Data (Viewing & Download)
  - ❑ Web Map Service (WMS) 11.2011
  - ❑ Web Feature Service (WFS) Late 2012
  - ❑ Data to be INSPIRE Compliant by 06.2012

# Programme Management & Planning for Compliance



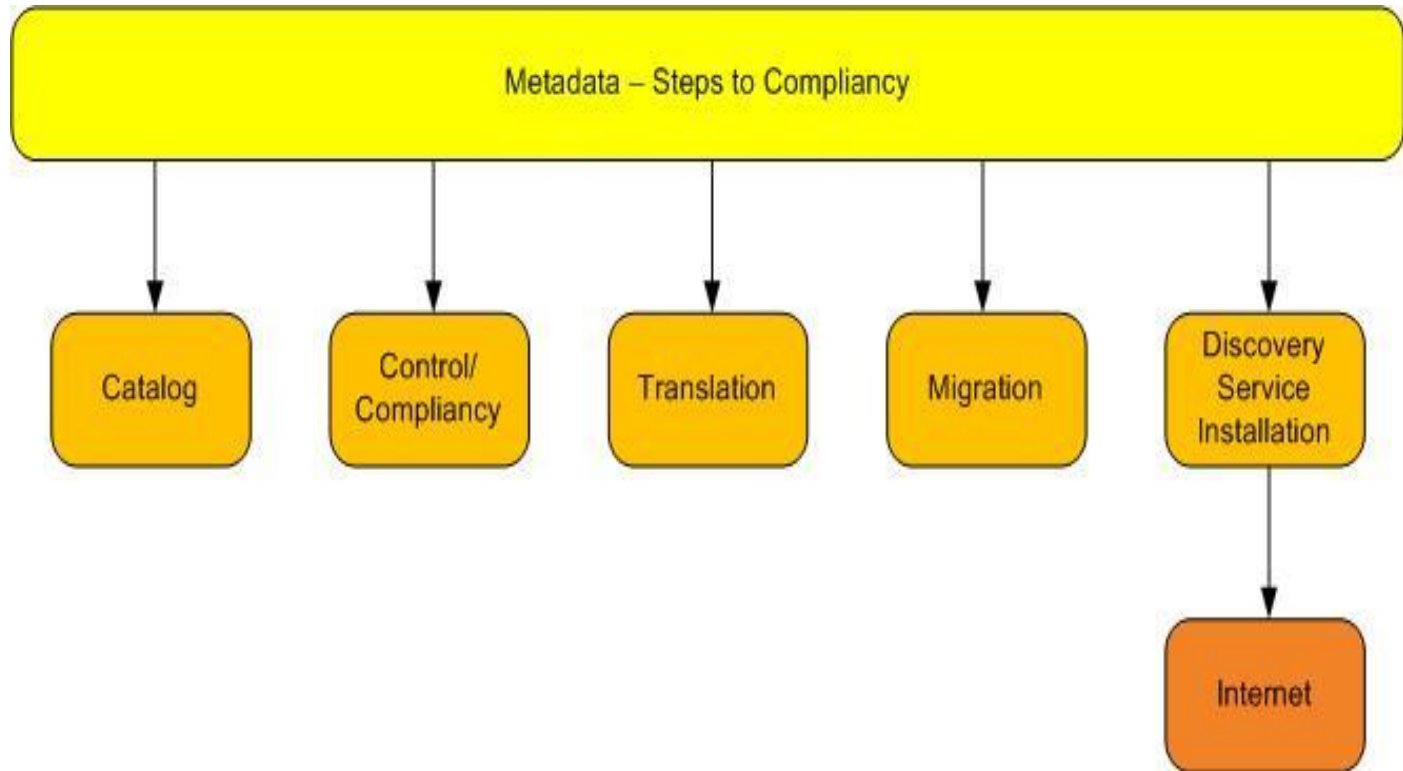
## Programme Management – Real Value Add to your Organisation

INSPIRE forces rationalisation and centralisation of metadata/data

The Advantages in addition to Compliance

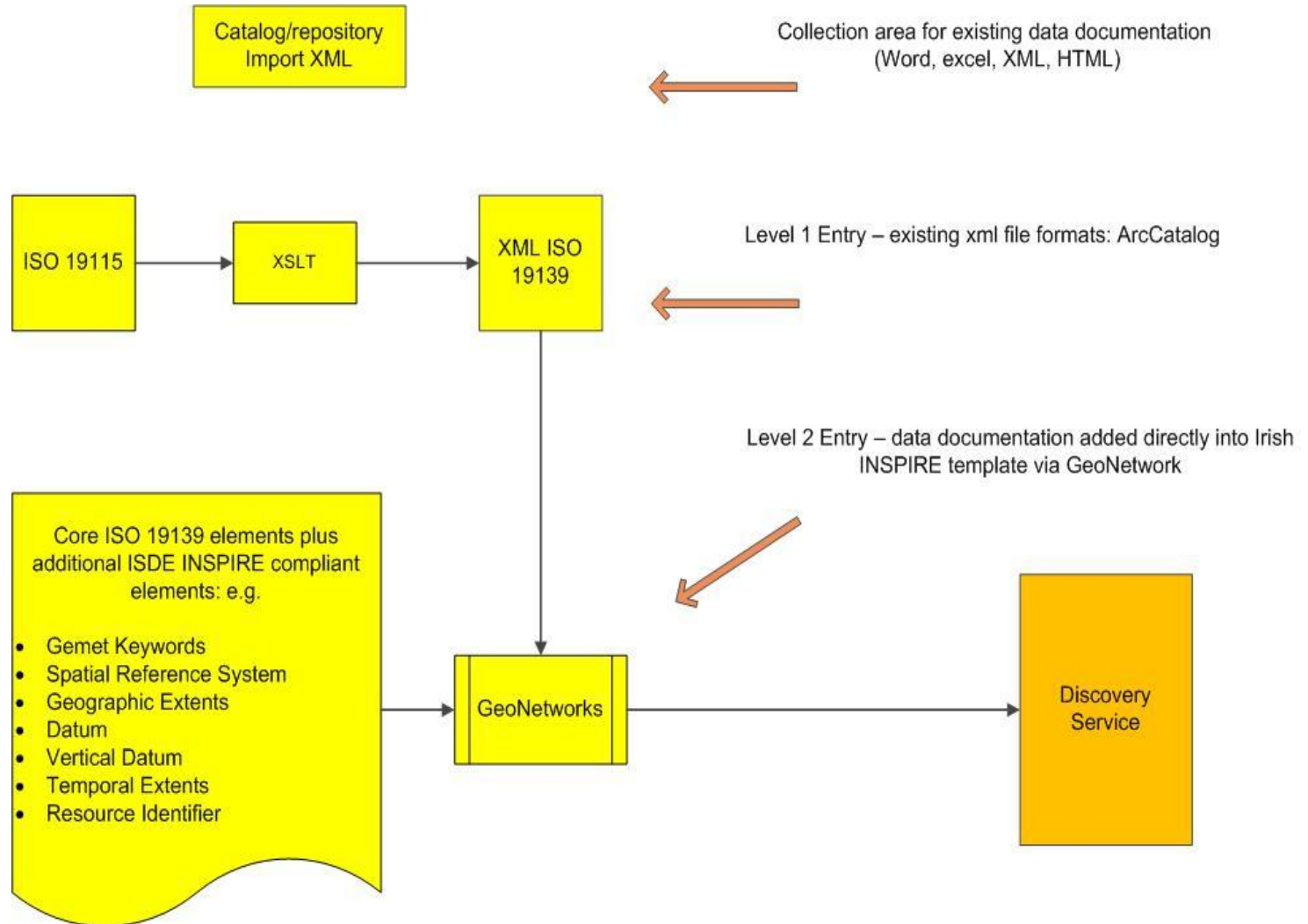
- Fast & efficient access to information
- Auditability of data assets
- Optimised use of data infrastructure resources
- Harmonisation of data throughout organisation
- Optimum use of space

# Metadata

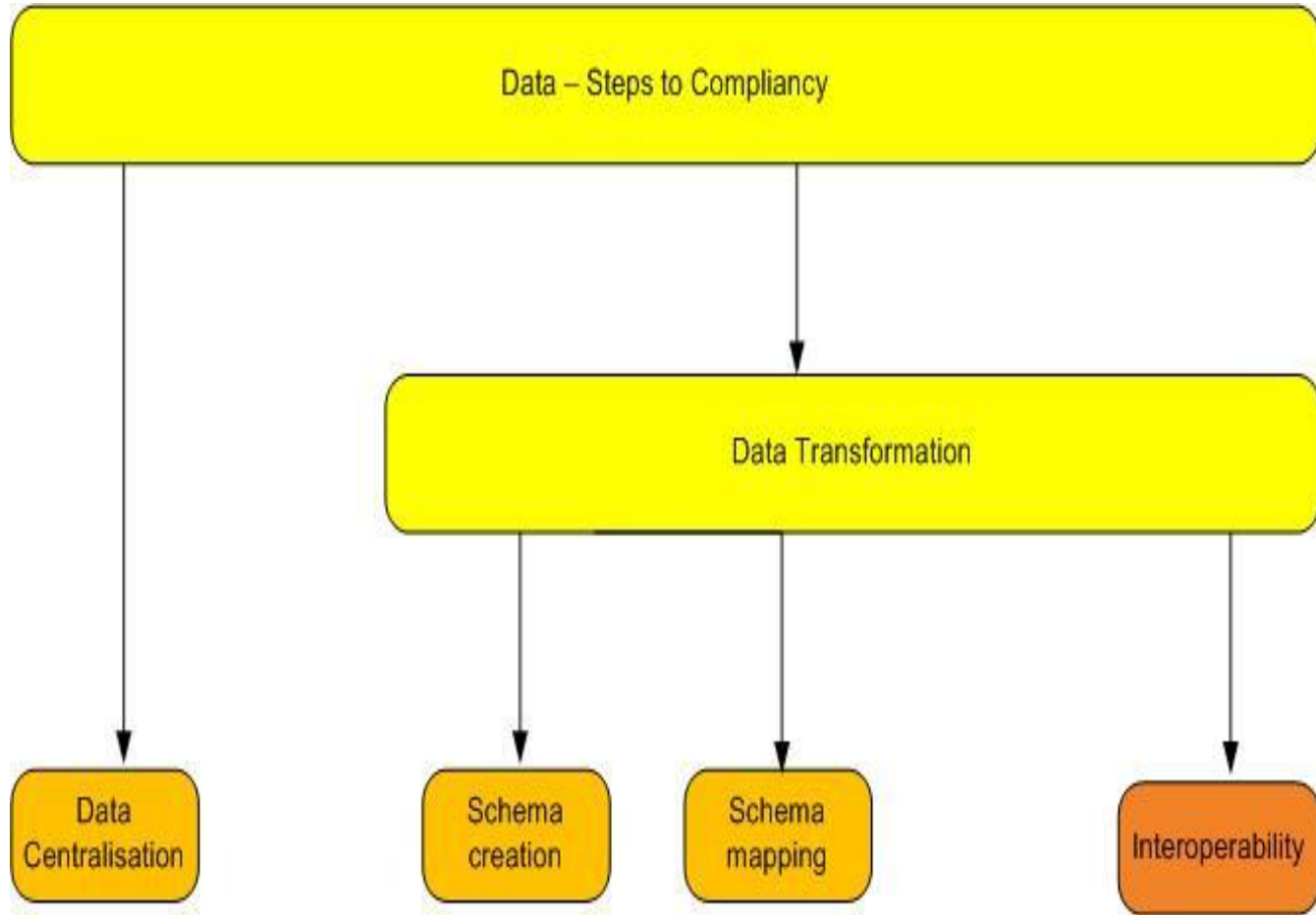




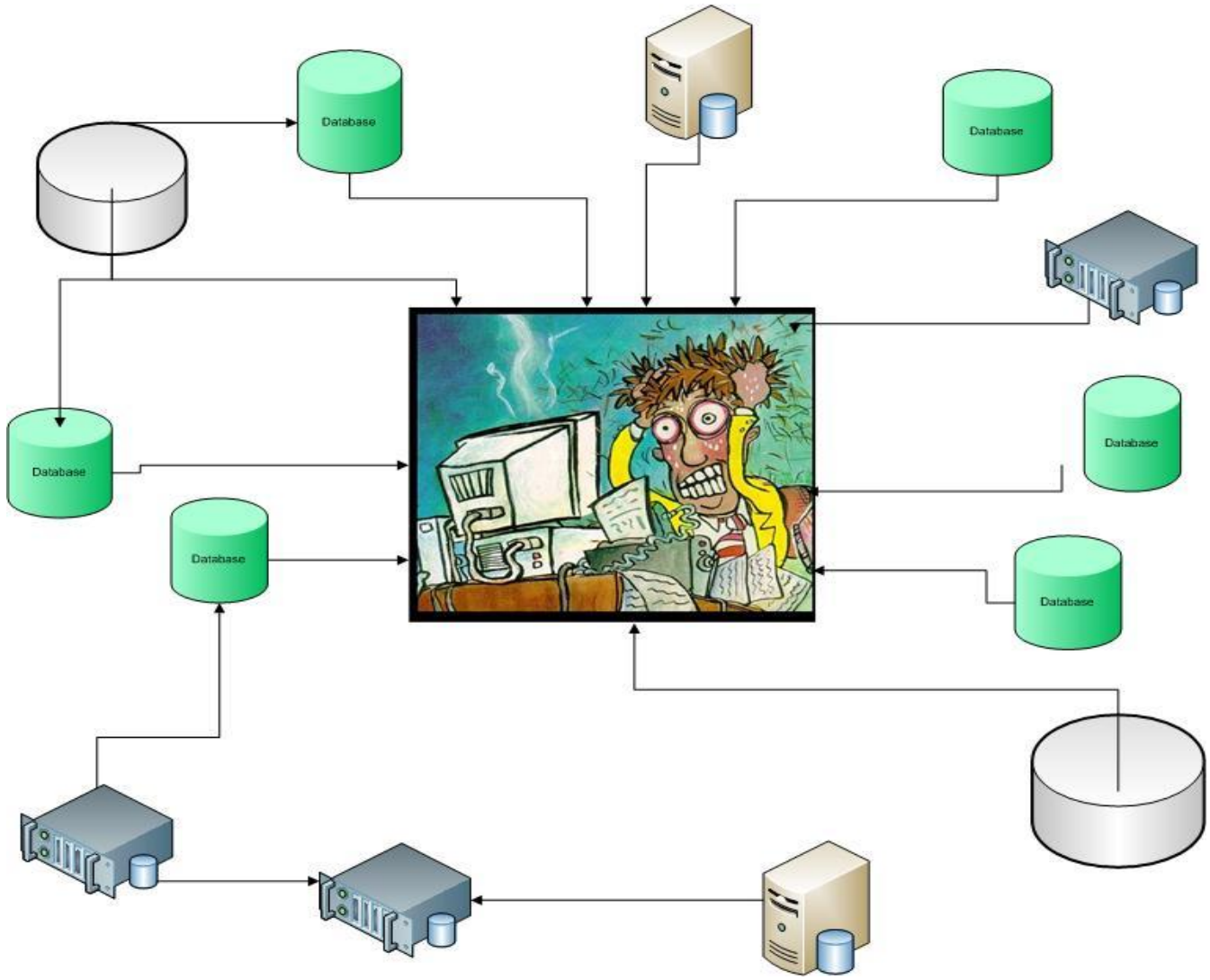
# Dynamics of Change – Proprietary & Open Source Options



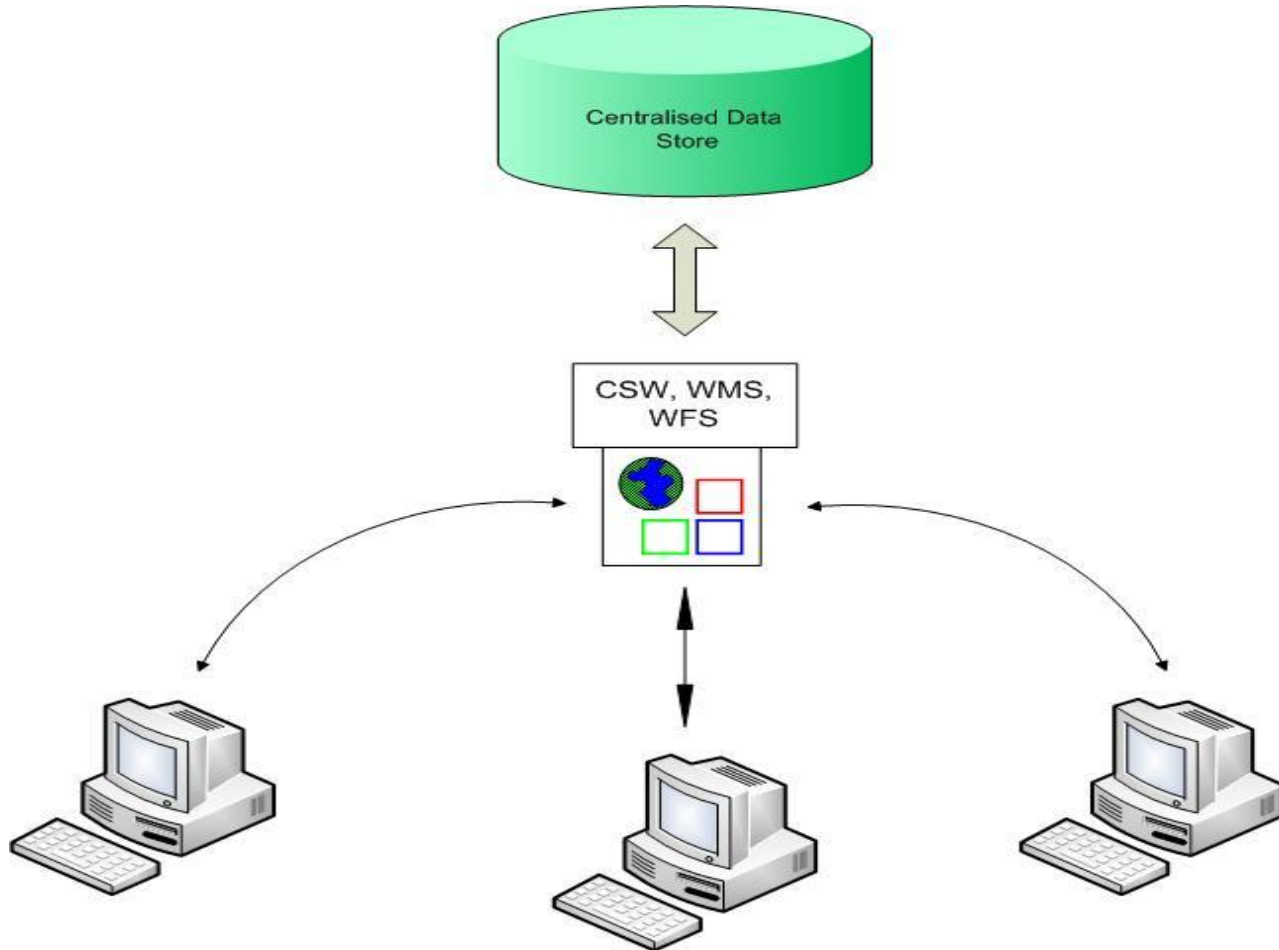
# Data



# Data Centralisation – The Reality !

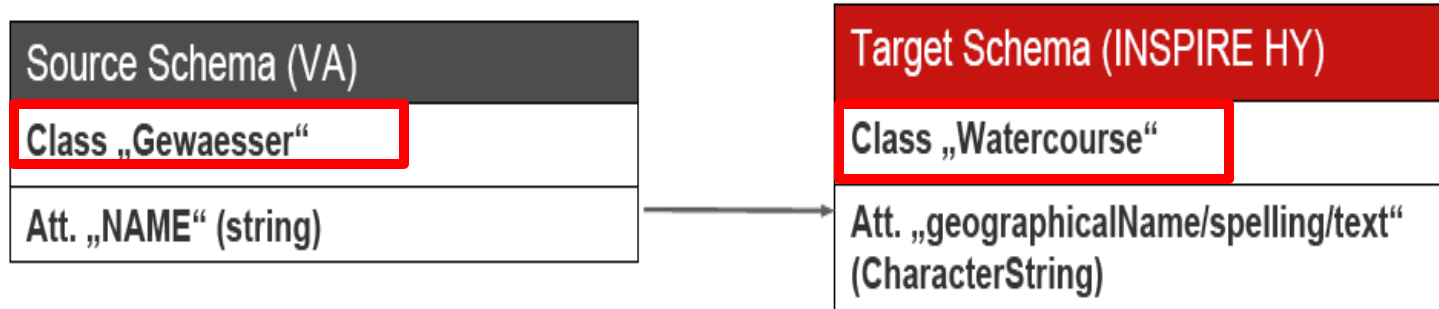


# Data Centralisation – Advantages via INSPIRE Compliance

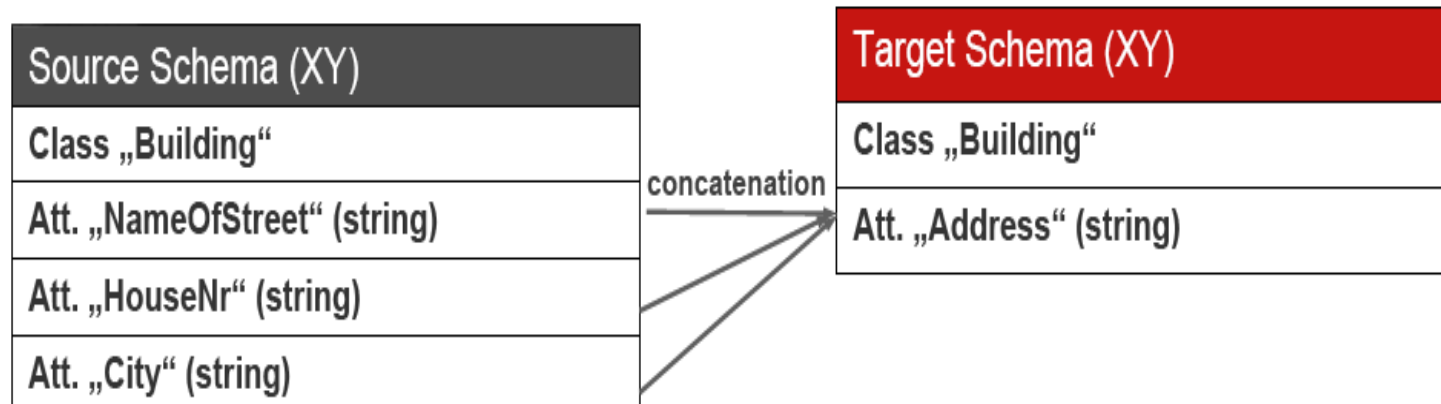


## Data Transformation - Interoperability

- Renaming feature class or attributes

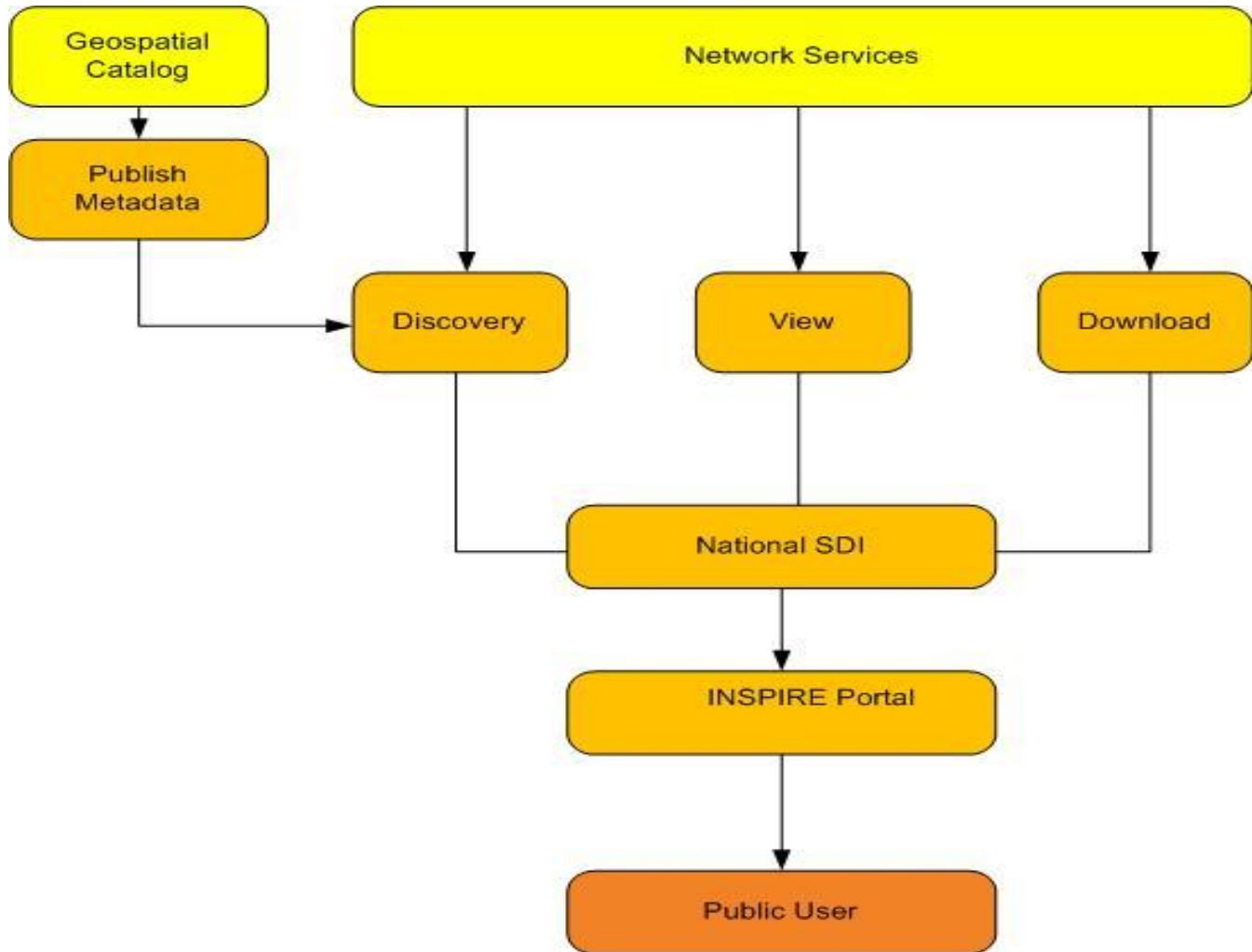


- Merge/Split of features or attributes

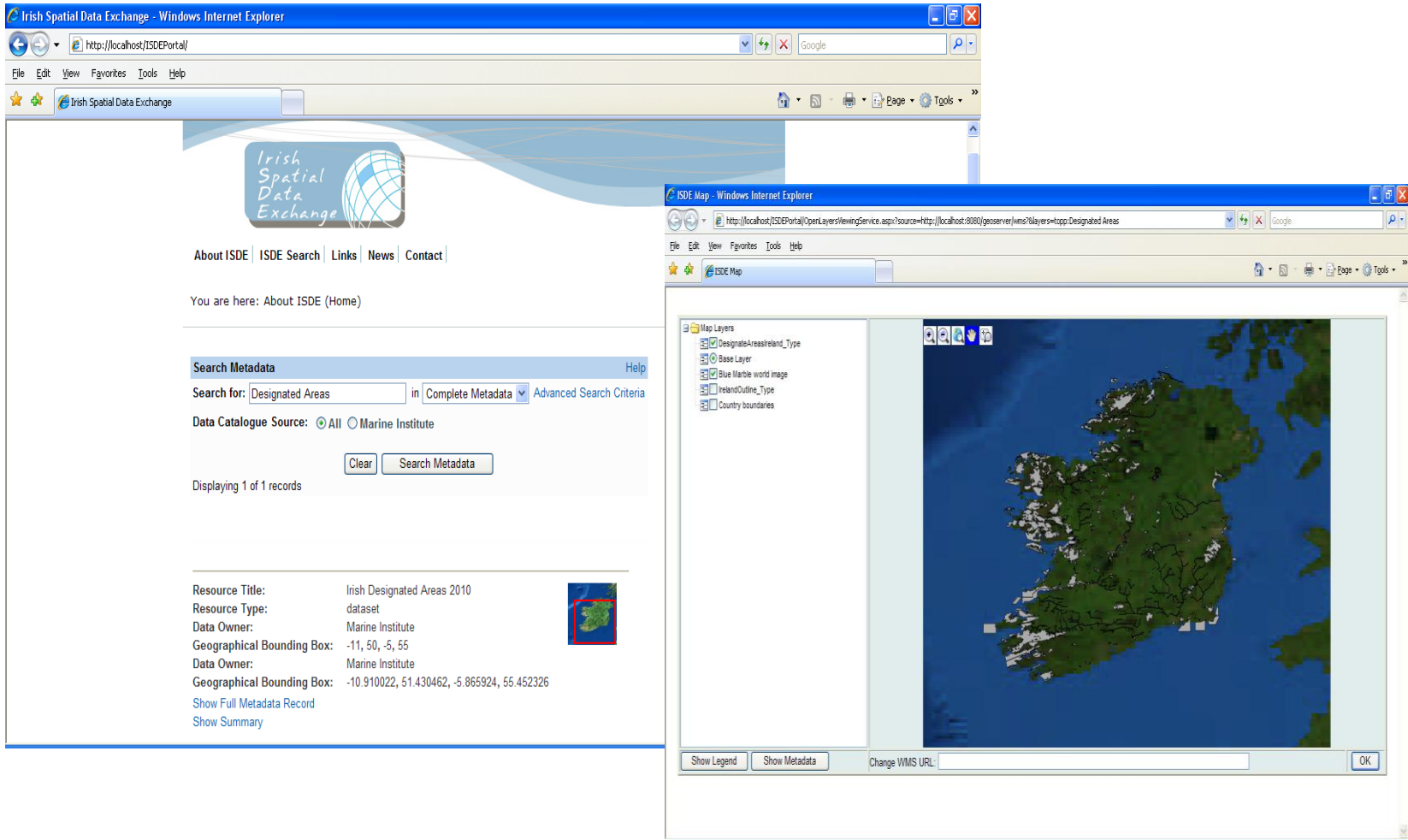


Open Source HUMBOLDT - Hale Tool

## Bringing it all together – Network Services




# Irish Spatial Data Exchange



The image shows two overlapping browser windows. The background window is the main website, and the foreground window is the map application.

**Irish Spatial Data Exchange - Windows Internet Explorer**  
Address: http://localhost/ISDEPortal/  
Menu: File Edit View Favorites Tools Help  
Search for: Designated Areas in Complete Metadata Advanced Search Criteria  
Data Catalogue Source:  All  Marine Institute  
Buttons: Clear Search Metadata  
Displaying 1 of 1 records

**Resource Details:**

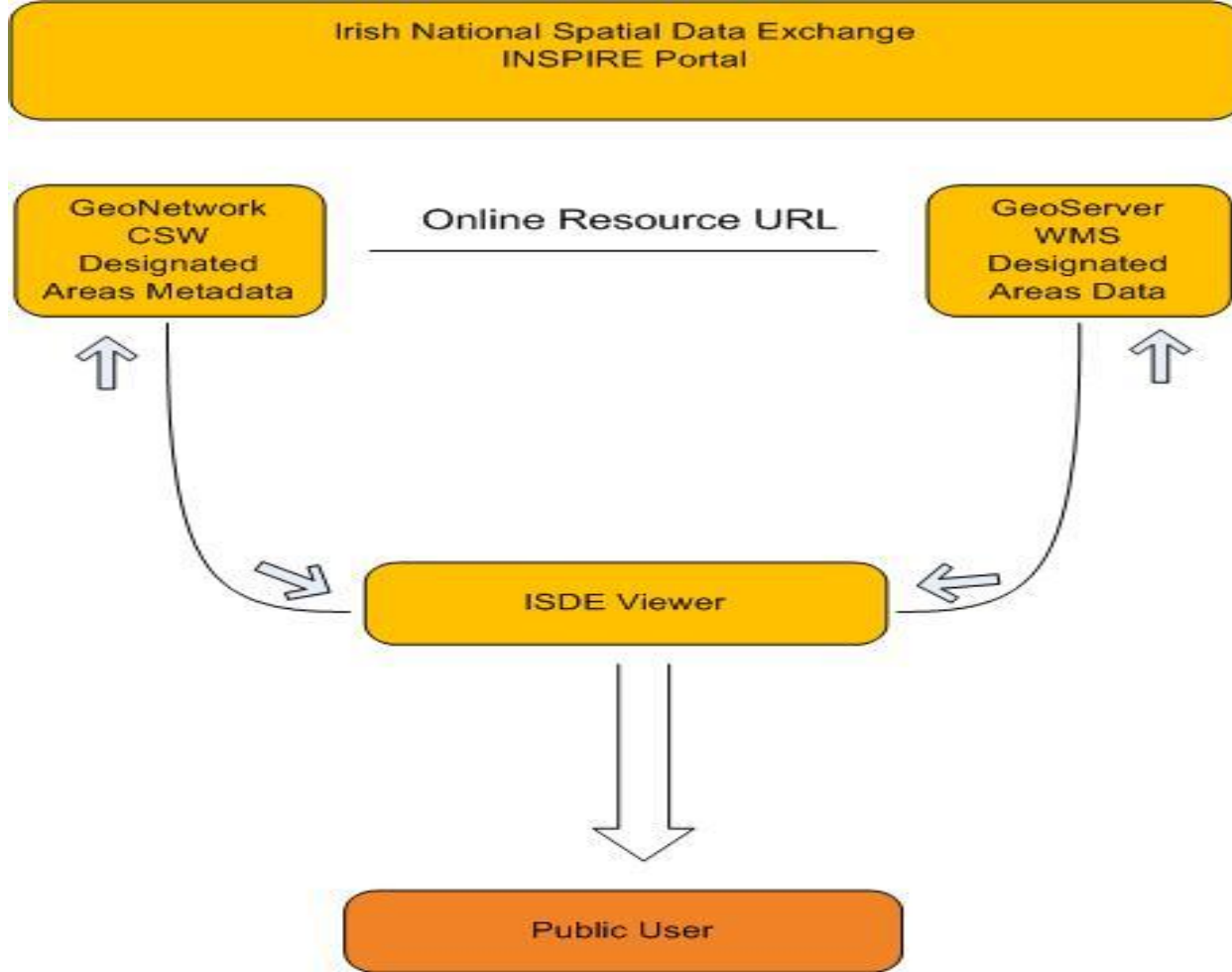
Resource Title:	Irish Designated Areas 2010	
Resource Type:	dataset	
Data Owner:	Marine Institute	
Geographical Bounding Box:	-11, 50, -5, 55	
Data Owner:	Marine Institute	
Geographical Bounding Box:	-10.910022, 51.430462, -5.865924, 55.452326	

[Show Full Metadata Record](#)  
[Show Summary](#)

**ISDE Map - Windows Internet Explorer**  
Address: http://localhost/ISDEPortal/OperLayersViewingService.aspx?source=http://localhost:8080/geoserver/wms?layers=topp:DesignatedAreas  
Menu: File Edit View Favorites Tools Help  
Map Layers:

- DesignateAreasireland\_Type
- Base Layer
- Blue Marble world image
- IrelandOutline\_Type
- Country boundaries

# ISDE





## A Hybrid Approach for a Dynamic Solution

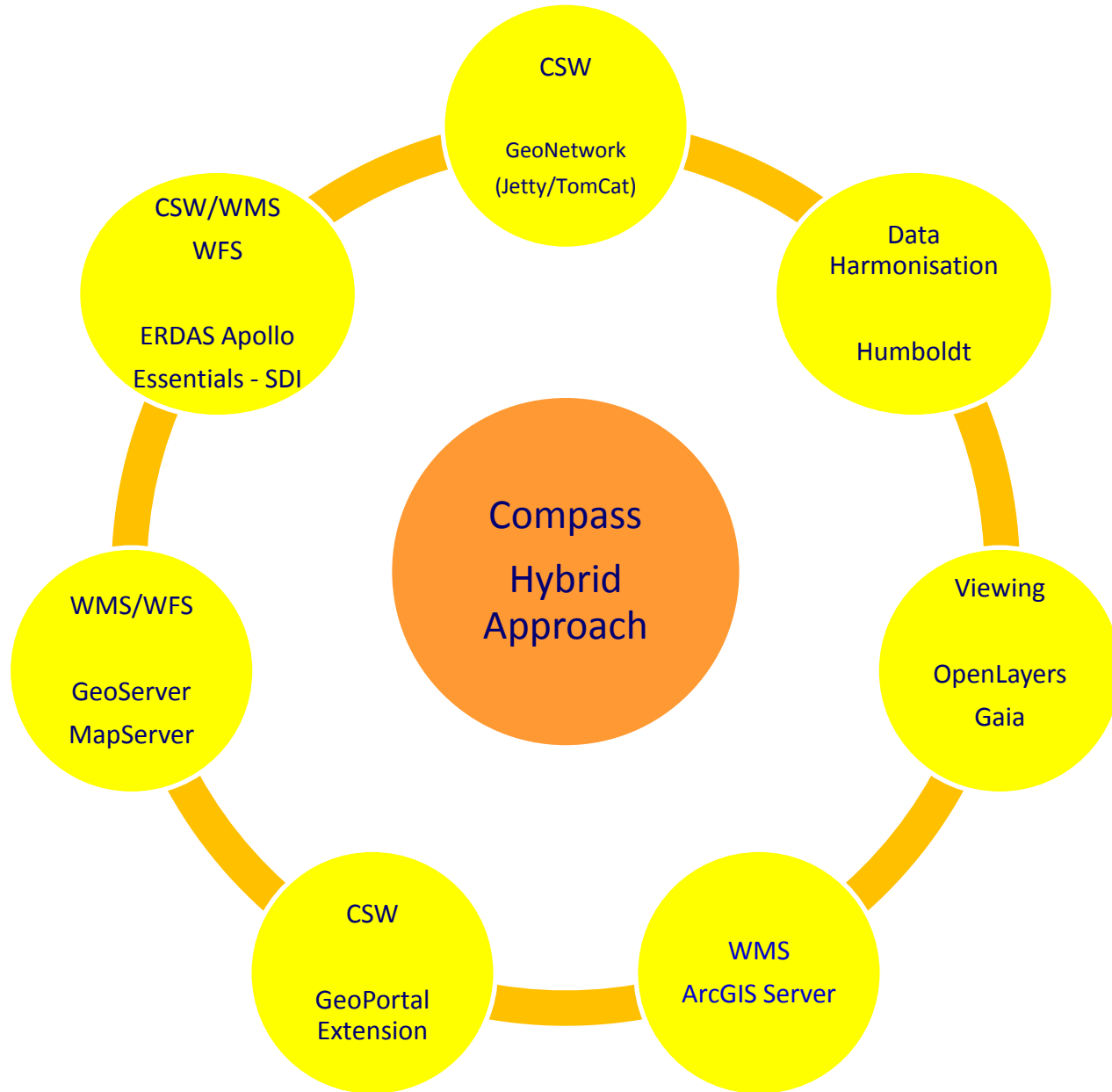
Compass Network Services Portfolio makes use of Open Source Technologies & GeoSpatial Web Services combined with Proprietary Software.

Operating systems/database systems (e.g. Microsoft Windows OS and SQL Server 2008)

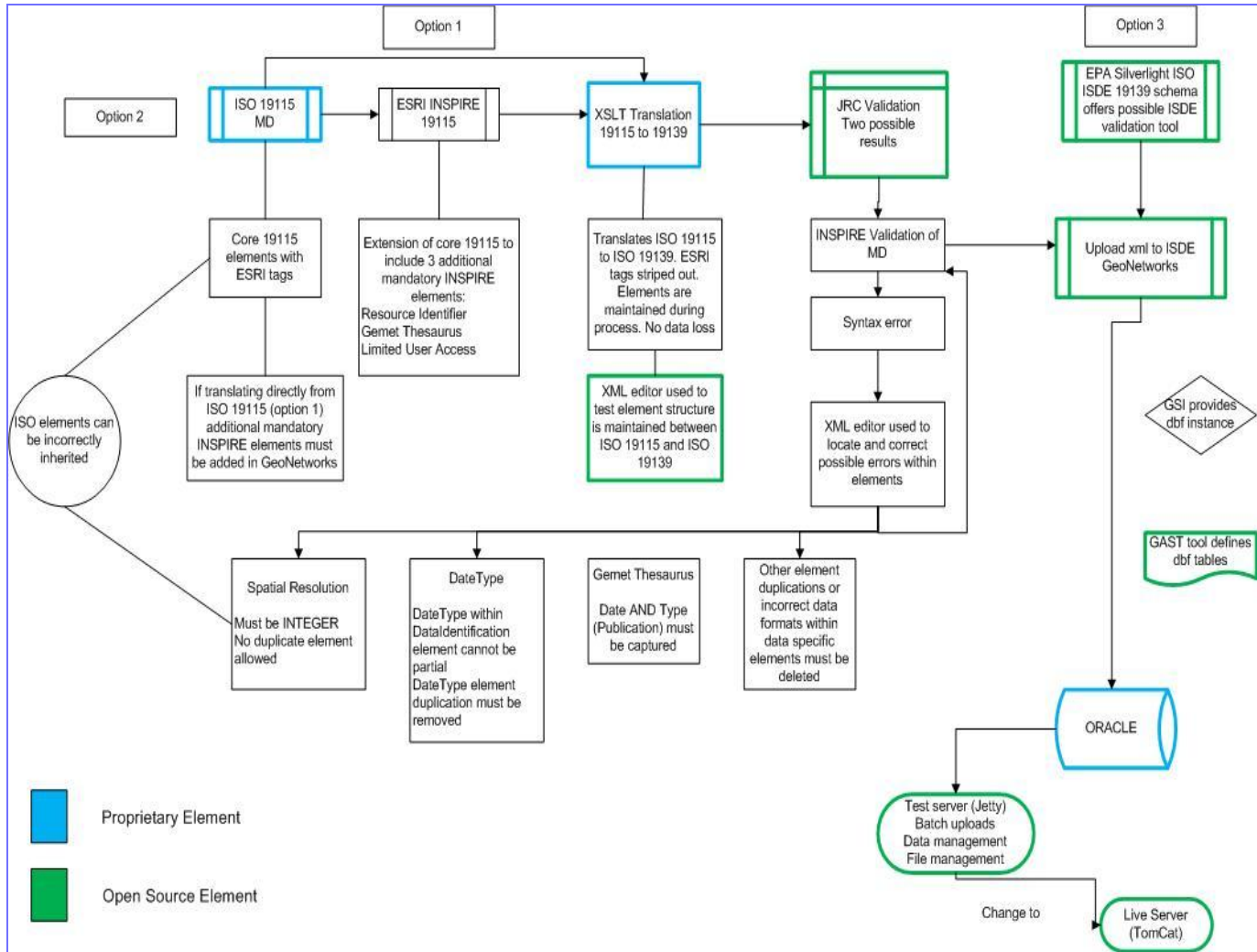
+ Open source solutions (e.g. GeoNetwork, MapServer/GeoServer)

+ Proprietary Software

= INSPIRE compliant solution



# Achieving INSPIRE compliancy – Geological Survey of Ireland



## Added Value at European Level

‘INSPIRE will unlock the potential of existing spatial data and spatial data infrastructures and gradually harmonise data and information services allowing integration of systems and datasets at different levels into a coherent spatial data infrastructure’

(INSPIRE Reference Data & Metadata Position Paper (2002))